



FGF-6 Polyclonal Antibody

Catalog No	YP-Ab-15994
Isotype	IgG
Reactivity	Human;Mouse;Rat
Applications	WB;ELISA
Gene Name	FGF6
Protein Name	Fibroblast growth factor 6
Immunogen	The antiserum was produced against synthesized peptide derived from the C-terminal region of human FGF6. AA range:159-208
Specificity	FGF-6 Polyclonal Antibody detects endogenous levels of FGF-6 protein.
Formulation	Liquid in PBS containing 50% glycerol, 0.5% BSA and 0.02% sodium azide.
Source	Polyclonal, Rabbit,IgG
Purification	The antibody was affinity-purified from rabbit antiserum by affinity-chromatography using epitope-specific immunogen.
Dilution	Western Blot: 1/500 - 1/2000. ELISA: 1/20000. Not yet tested in other applications.
Concentration	1 mg/ml
Purity	≥90%
Storage Stability	-20°C/1 year
Synonyms	FGF6; HST2; HSTF2; Fibroblast growth factor 6; FGF-6; Heparin secretory-transforming protein 2; HST-2; HSTF-2; Heparin-binding growth factor 6; HBGF-6
Observed Band	23kD
Cell Pathway	Secreted, extracellular space.
Tissue Specificity	Leukemia cell lines with platelet/ megakaryocytic differentiation potential.
Function	function:Can transform NIH 3T3 cells. Exhibits strong mitogenic and angiogenic properties.,similarity:Belongs to the heparin-binding growth factors family.,tissue specificity:Leukemia cell lines with platelet/ megakaryocytic differentiation potential.,
Background	The protein encoded by this gene is a member of the fibroblast growth factor (FGF) family. FGF family members possess broad mitogenic and cell survival activities, and are involved in a variety of biological processes, including embryonic development, cell growth, morphogenesis, tissue repair, tumor growth and invasion. This gene displayed oncogenic transforming activity when transfected into mammalian cells. The mouse homolog of this gene exhibits a restricted expression profile predominantly in the myogenic lineage, which suggested a role in muscle regeneration or differentiation. [provided by RefSeq,



Jul 2008],

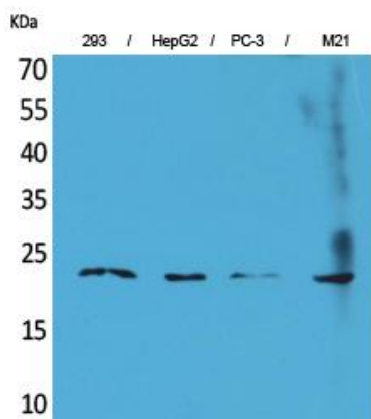
matters needing attention

Avoid repeated freezing and thawing!

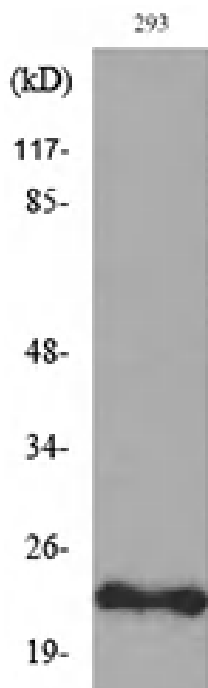
Usage suggestions

This product can be used in immunological reaction related experiments. For more information, please consult technical personnel.

Products Images



Western Blot analysis of 293, HepG2, PC-3, M21 cells using FGF-6 Polyclonal Antibody. Secondary antibody(catalog#:RS0002) was diluted at 1:20000



Western blot analysis of lysate from 293 cells, using FGF6 Antibody.